

OPTIMISING **PENALTY** DECISIONS

VIDEO SCENARIO



DO WE KICK FOR GOAL OR GO FOR THE TRY?

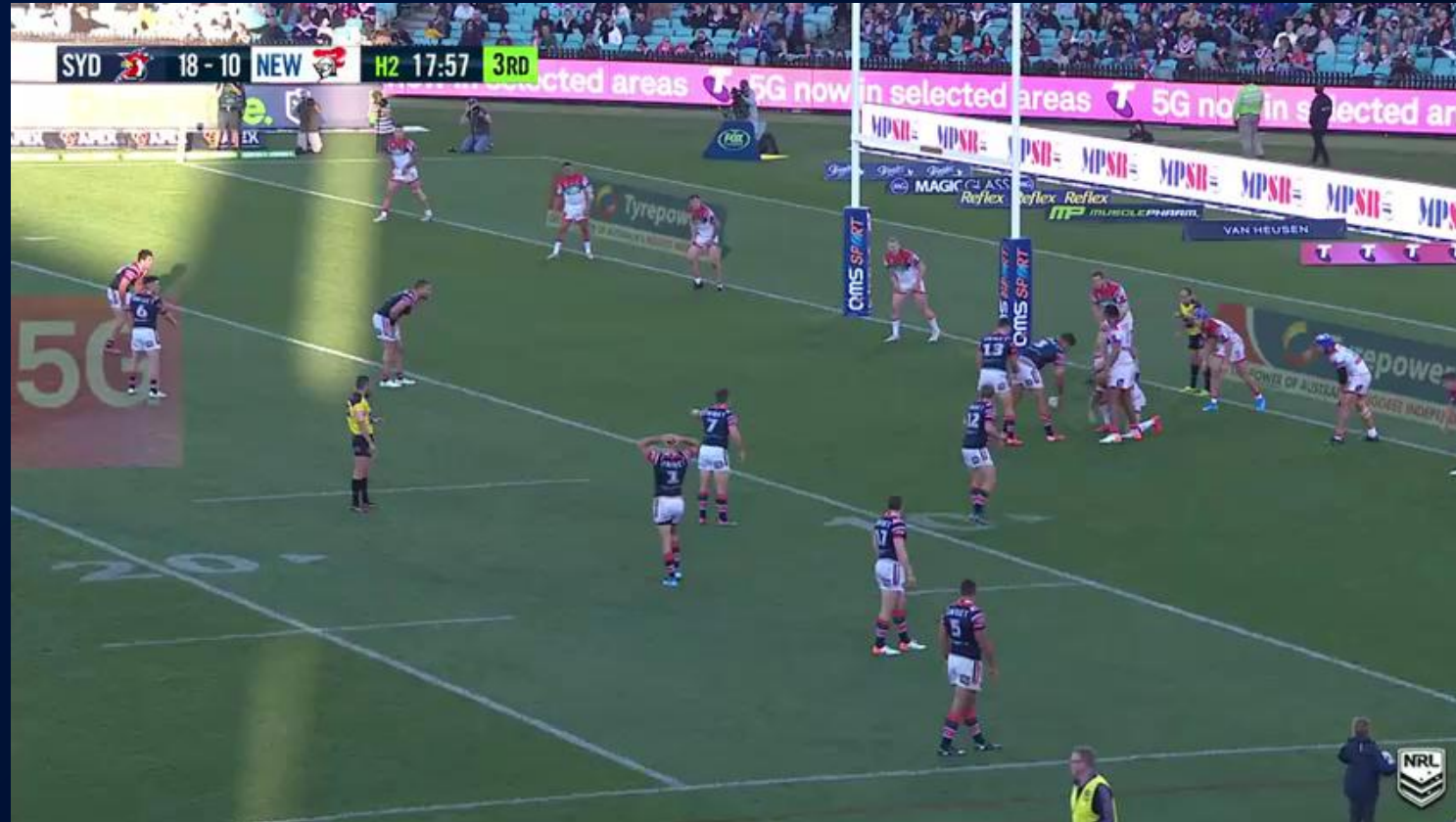
THE PROBLEM

DO WE KICK FOR GOAL OR GO FOR THE TRY?

Given a penalty decision in an attacking zone, should a team kick for goal or attack (tap or kick for touch)?

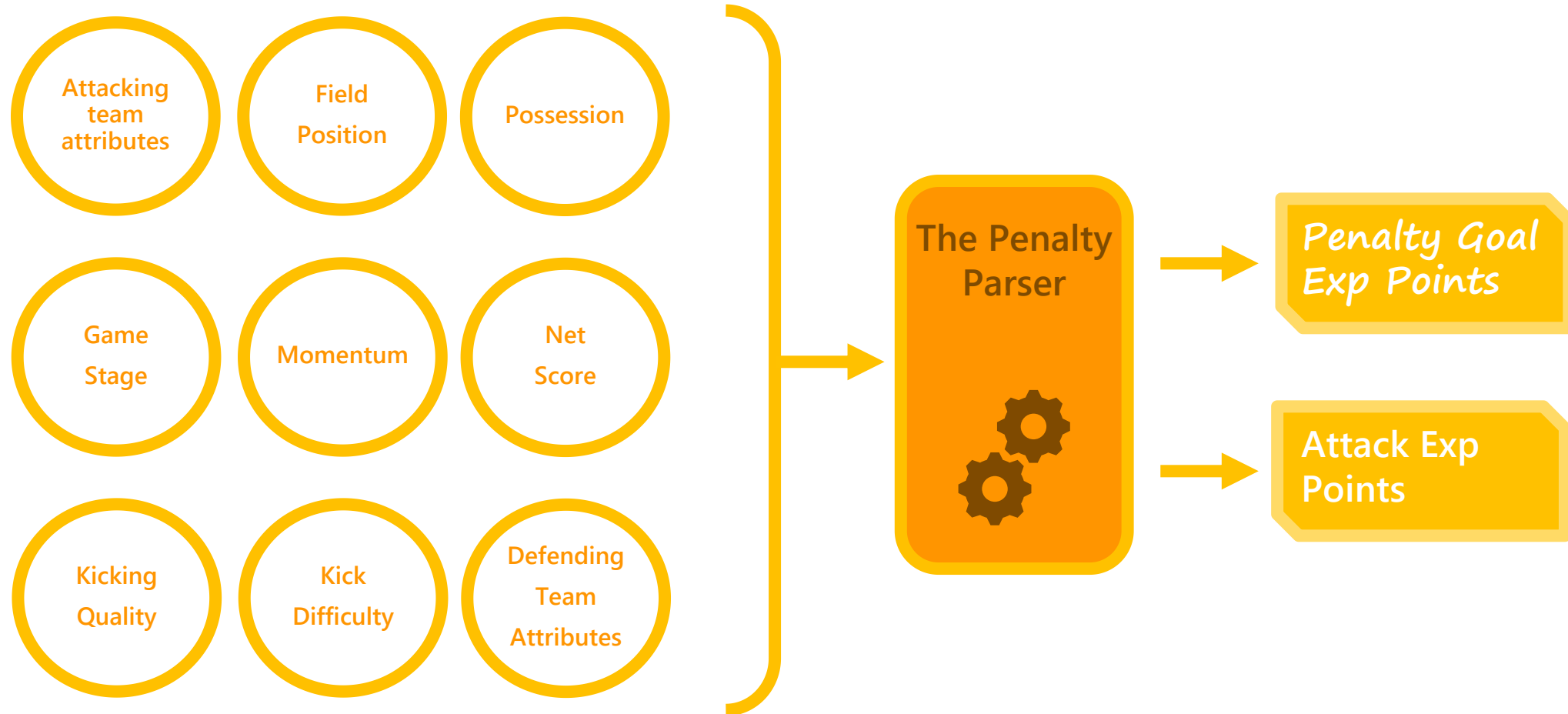


THE ACTUAL OUTCOME



SCORED ON THE 3RD TACKLE IN THE FOLLOWING SET

INTRODUCING: THE PENALTY PARSER

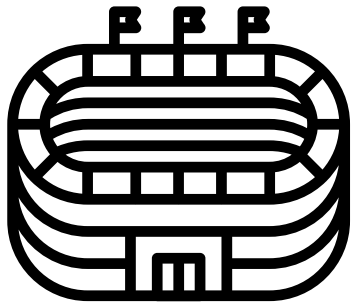


WHY DOES THE MODEL SUGGEST ATTACK?



Quality Attacking Team

Team playing at home

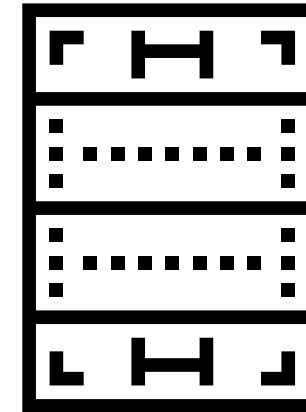


18 - 10

Team has a lead of 6+ points

6 - 0

Better field position in past 10 sets



A lead of 6 points in the last 10 sets

THE MODEL FINDS THAT TEAMS DON'T KICK ENOUGH

66%

Of the penalty decisions, teams
should kick for goal

VS

28%

Of the time, teams
actually kick for goal

DO WE KICK FOR GOAL OR GO FOR THE TRY?



THE ACTUAL OUTCOME



SOMETIMES TEAMS DON'T BACK THEMSELVES EITHER

9%

*OF PENALTIES TAKEN , TEAMS
WOULD KICK FOR GOAL WHEN THEY
SHOULDEVE TAKEN THE TRY*



KICK FOR GOAL OR GO FOR THE TRY?

TEAMS LEAVE POINTS ON THE FIELD EVERY GAME

3.5

less points than expected points

OR

0.64

Points Per decision



COACHES WILL STILL MAKE THE FINAL DECISION

DATA INFORMS DECISIONS

The tool should be interpreted as a statistical summary of the situation– it is an expected points decision, which doesn't consider other aspects of the game, such as the score context or 'feel' factors.

COME SEE OUR TOOL FOR COACHES!

